



## Master your photography exposure in any shooting situation

The Xpo Grey chart is designed to novice, amateur or expert photographers whose search the best exposure for their pictures. On studio as well as outdoor, the chart is used as a referential to define in the best way the optimum exposure for all the pictures.

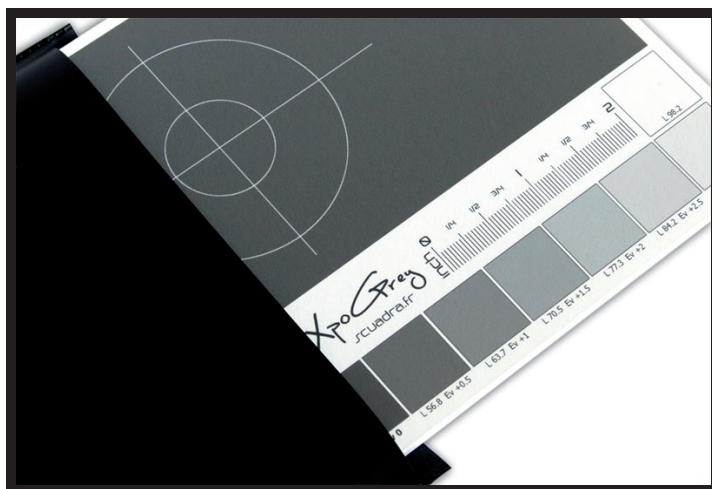
Thanks to its dull surface, the Scuadra XpoGrey 18% Exposure card reduce brilliance and glares to the minimum to give to the user a great work flexibility. Dimensions of the the Scuadra XpoGrey 18% Exposure card are 115x180 mm. Made of high-density polymers with 4mm depth, it is very resistant and will be easily store in your carryall.

To help focusing, a target is present on the exposure card. Its dimensions are defined to not altering the measurement of the medium grey area. Whatever the targeted zone of this 18% area is, the exposure provided is optimum.

On production or postproduction, a grey levels scale permits to control very accurately the exposure of the pictures. It covers an exposure of -2 IL to +3 IL by half diaphragm increment (1/2 IL). For example, when the clearest or darkest patches are too similar, it shows significantly when a picture is over or under-exposed.

To satisfy professional exigencies, all the areas (main area and levels scale) are measured with a spectrophotometer. The targeted values are known and written on the Lab zone under each grey area. To assure the colors stability in time, a black and opaque suitable flex case is provide with each Scuadra XpoGrey 18% Exposure card. It protects it and keeps it away from light when not in use. Besides, the chart is guaranteed with no optical bleaching agents and with neutral pH.

Two size scales (one in centimeters, the other in inches) are present on the exposure card. They give a useful referential for different kinds of photographic works. The Scuadra XpoGrey is manufactured and conditioned in France.



### Product characteristics:

- Total exposure control
- Standard dimensions: 115x180 mm
- Grey levels area on 1/2 diaphragm
- Suitable flex case
- Rigid chart 4 mm depth.

### Product advantages:

- No optical bleaching agents and neutral pH.
- Measured by spectrophotometer
- Central spot metering
- Light weighted semi-rigid chart